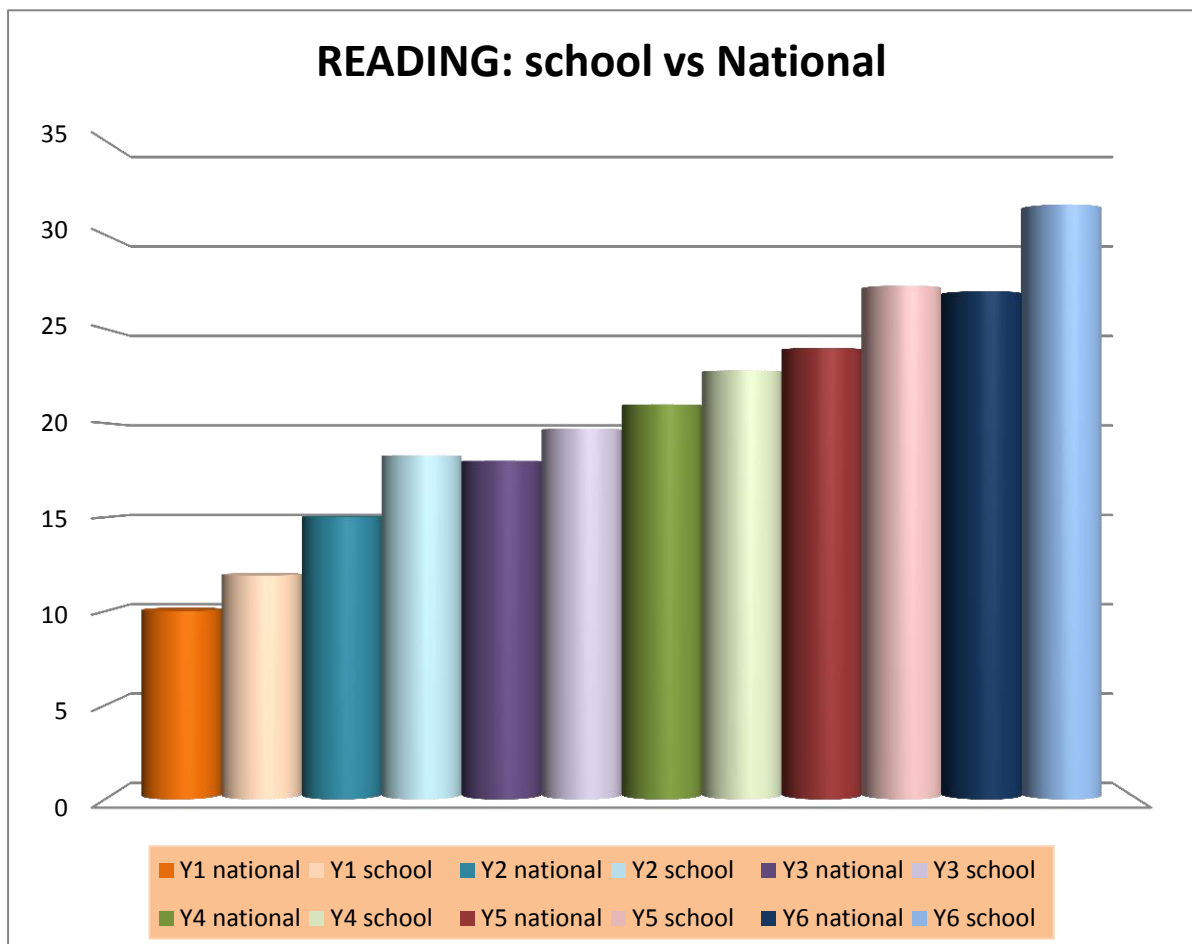


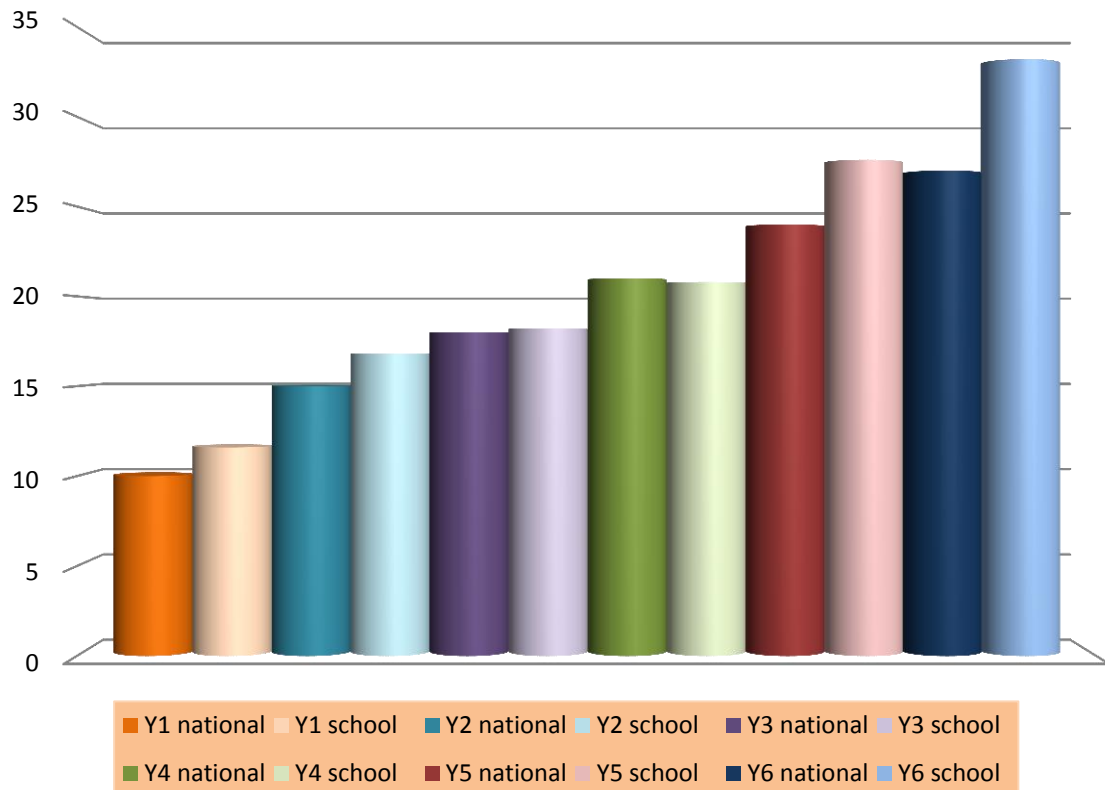
These graphs demonstrate the end of year attainment (2015) of each year group across the school in comparison to the national average.

Every year group at Kington St Michael CE Primary School is achieving at significantly higher levels than national averages.

Progress across the school is good and sustained through every year group, with the attainment gap widening as the children move up the school. Indeed, some year groups are above the national average for the year group ahead of them, demonstrating that they are at least a full year ahead of expectations.



## WRITING: school vs National



## MATHS: school vs National

